



40 Huntingwood Drive Huntingwood NSW 2148

Phone: (02) 8825 1999 Website: www.aeroflowperformance.com

AEROFLOW PERFORMANCE

LSA INTAKE KIT

WARNING!

THIS PRODUCT REQUIRES DETAILED KNOWLEDGE OF AUTOMOTIVE SYSTEMS. WE RECOMMEND THAT THIS INSTALLATION BE CARRIED OUT BY A QUALIFIED AUTOMOTIVE TECHNICIAN.

INTRODUCTION

Congratulations on your purchase of Aeroflow Performance air intake kit. Aeroflow Performance products cannot and will not be responsible for any damage, or other conditions resulting from misapplication of the parts described herein. However, it is our intention to provide the best possible products for our customer, products that perform properly and satisfy your expectations. Should you have any questions? Please call technical support at +61 2 8825 1900 and have the product part number on hand when calling.

Aeroflow Performance cold air intake system features a large diameter free flowing intake path to ensure maximum performance from your LSA powered vehicle. This cold air intake kit is a high-performance air box designed as a direct fit for all VF GEN-F LSA 6.2. Our kit contains a large Aeroflow Performance pod filter to assist in minimizing the restriction of air flow and is contained in a fabricated housing which seals against the underside of the vehicles bonnet to reduce the intake of hot air from inside the engine bay. It is designed for easy installation with OEM fitment.

The below installation steps are provided as a guideline only.



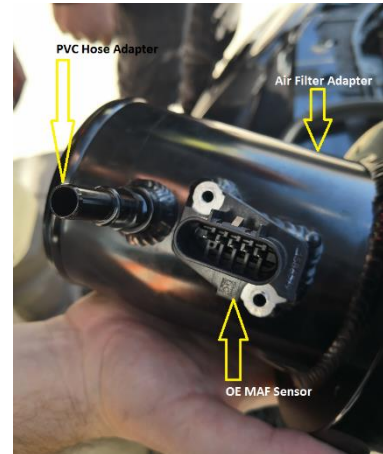
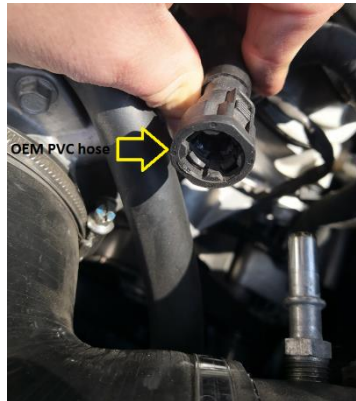
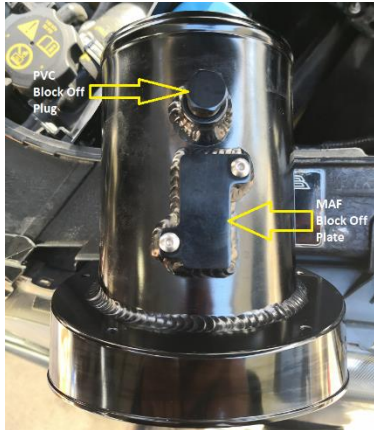
For more information or technical enquires

Contact: Aeroflow Performance on

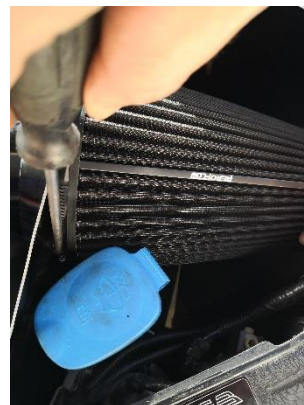
Phone: (02) 8825 1979 Website: www.aeroflowperformance.com

INSTALLATION

1. Remove the standard air box and intake tubing from the vehicle following the factory service manual if you are unsure how to remove these from the vehicle.
2. Ensure to take note of placement of all hoses and plugs from the MAF and intake piping from the OE setup.
3. Assemble the air filter adaptor to the air box with the MAF slot facing rearward. It will only screw together in this orientation.
4. Place the OE MAF into the slot and screw into place.
 - I. **Note:** if using a MAF less tune on your vehicle we have included a blank off plug in the kit which is can be used to block off the hole.
5. Screw in PCV hose adaptor provided into air filter adaptor.
 - I. **Note:** A plug to block off the factory intake PVC hose from the rocket cover is included in this kit if you wish to not use this OE factory hose or are running an aftermarket PVC catch can setup.



6. Fit the pod filter to air filter adaptor and tighten down clamp.

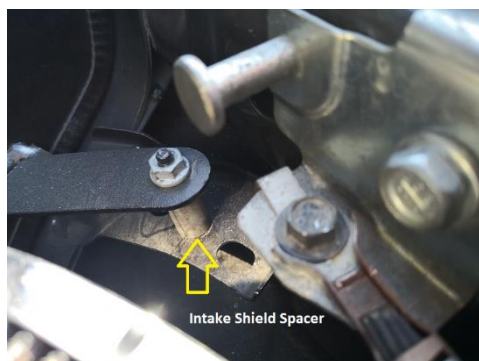


For more information or technical enquires

Contact: Aeroflow Performance on

Phone: (02) 8825 1979 Website: www.aeroflowperformance.com

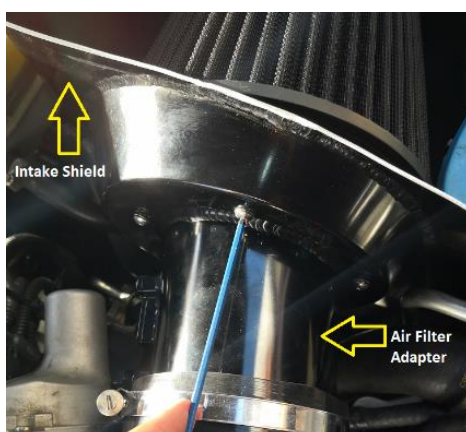
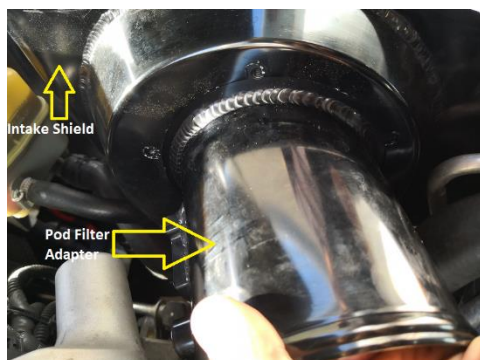
7. Fit the black spacer provided to the standard air box mounting stud to allow the aftermarket shield to fit in the OE factory position.



8. Fit the Intake shield into position in the vehicle. Ensure the slots are correctly lines up on the radiator support.



9. Place the air box assembly (shield with intake adaptor and pod filter) into vehicle. Line up the bolt holes to correspond with holes in the intake shield. Tighten the allen key screws.

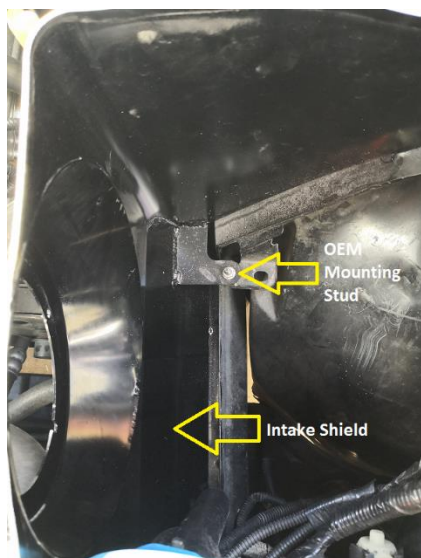


For more information or technical enquires

Contact: Aeroflow Performance on

Phone: (02) 8825 1979 Website: www.aeroflowperformance.com

10. Place washer and M6 nut supplied on the mounting stud and tighten, also fit and tighten M6 cap screw supplied on the lower mounting tag.



11. The silicone elbow has a long side and a short side, the short side is fitted to the air filter adaptor and the long side to the throttle body.
12. Once elbow is fitted place hose clamps in position and tighten. Insert connector to the MAF and connect the PCV hose on the fitting on the air filter adaptor.
- I. **Note:** if not using these due to MAF less tune and/or aftermarket PVC setup ensure wiring and hoses are secured out of the way so they do not come into contact with drive belts etc.
13. Place the supplied rubber insulator over the top of the intake shield to help seal the shield to the bonnet and protect it from any damage.



14. Air box assembly into vehicle is now complete.

For more information or technical enquires

Contact: Aeroflow Performance on

Phone: (02) 8825 1979 Website: www.aeroflowperformance.com